



HF/50 MHz ALL BAND 1 kW LINEAR AMPLIFIER

IC-PW1 IC-PW1EURO



• Controller attached



The power you need... to succeed!

Wide frequency coverage with 1 kW output*

All HF bands plus the 50 MHz band are covered. The IC-PW1/EURO provides a stable, clean and low distortion 1 kW from 1.8 MHz to 50 MHz*. In addition, full duty cycle (even during more demanding RTTY or SSTV operation) and full break-in operation are possible. Great for DX'peditions or contest operation.

*Guaranteed within amateur bands only.

Wide ALC adjustable range

Internal circuitry allows the ALC to be adjusted over a wide range. This means that the IC-PW1/EURO can be used with almost any HF, 6 m or HF/6 m rigs—not only Icom rigs*!

*Ask your dealer about usable exciters.

Compact body

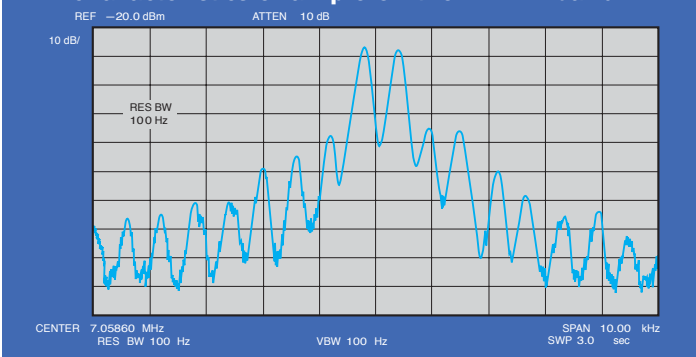
Dimensions, including amplifier, power supply, tuner and controller, are only 350(H) × 269(W) × 378(D) mm*. And, because the controller is detachable, the IC-PW1/EURO can be installed almost anywhere in your shack.

*6²⁵/₃₂(H) × 2²⁵/₃₂(W) × 9¹/₁₆ in.

Other outstanding features...

- Output antennas are selectable from exciters (Icom transceivers only), even when the power of the IC-PW1/EURO is off
- Automatic AC input voltage selector is employed
- Current (I_b), Voltage (V_o), temperature, SWR and output power protectors are available
- Automatic antenna tuner built-in

IMD characteristics example on the 7 MHz band



Icom Inc.

SPECIFICATIONS

GENERAL

- Frequency coverage (MHz):

1.800– 1.999	3.500– 3.999
7.000– 7.300	10.100– 10.150
14.000– 14.350	18.068– 18.168
21.000– 21.450	24.890– 24.990*
28.000– 29.700*	50.000– 54.000

*The U.S.A. version can only be used the antenna tuner on the 24–28 MHz bands.
- Power supply requirements: 180–264 V AC or 90–132 V AC (single-phase; 50/60 Hz)
- Current drain: Less than 15 A (max. output at 200 V)
Less than 20 A (max. output at 100 V)
- Usable temperature range: –10°C to +40°C; +14°F to +104°F
- Duty cycle: Full duty
- Input connector: SO-239 × 2 (50 Ω)
- Output connector: SO-239 × 4 (50 Ω)

LINEAR AMPLIFIER

• Output power:

AC Input	180–264 V AC	90–132 V AC
CW, RTTY	1 kW	500 W
SSB	1 kW PEP	500 W PEP

- Driving power: Max. 100 W
- Spurious emissions: Less than –60 dB (HF bands)
Less than –70 dB (50 MHz)

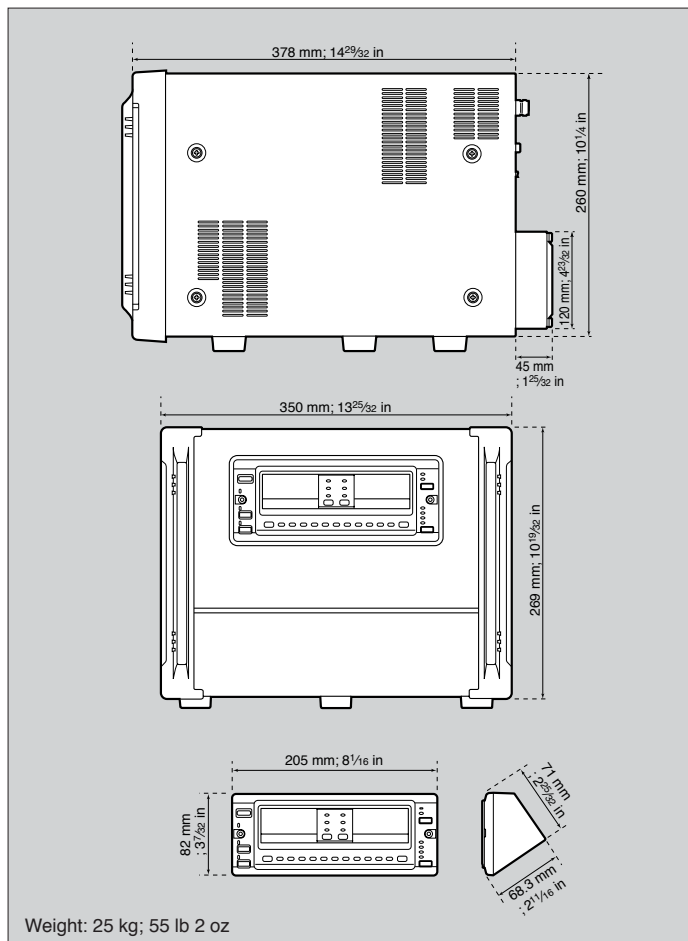
ANTENNA TUNER

- Output matching range: 16.7 Ω to 150 Ω (HF bands) (tuner switch ON)
20.0 Ω to 125 Ω (50 MHz)
- Auto tuning accuracy: VSWR 1.5:1 or less
- Min. required input power: 60 W
- Insertion loss: Less than 1 dB (after tuning)

Supplied accessories:

- Controller separation cable
- ACC cables
- Coaxial cable with PL-259 plugs

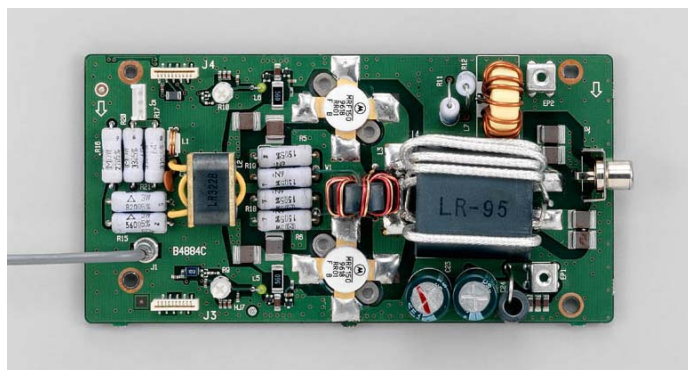
All stated specifications are subject to change without notice or obligation.



INTERNAL VIEW



PA UNIT



Icom Inc.

1-1-32, Kamiminami, Hirano-ku, Osaka 547-0003, Japan Phone: +81 (06) 6793 5302 Fax: +81 (06) 6793 0013 URL: <http://www.icom.co.jp/world/index.html>

Count on us!

Icom America Inc.

2380 116th Avenue NE,
Bellevue, WA 98004, U.S.A.
Phone : +1 (425) 454-8155
Fax : +1 (425) 454-1509
E-mail : sales@icomamerica.com
URL : <http://www.icomamerica.com>

Icom New Zealand

146A Harris Road, East Tamaki,
Auckland, New Zealand
Phone : +64 (09) 274 4062
Fax : +64 (09) 274 4708
E-mail : inquiries@icom.co.nz
URL : <http://www.icom.co.nz>

Icom (UK) Ltd.

Unit 9, Sea St., Herne Bay,
Kent, CT6 8LD, U.K.
Phone : +44 (01227) 741741
Fax : +44 (01227) 741742
E-mail : info@icomuk.co.uk
URL : <http://www.icomuk.co.uk>

Asia Icom Inc.

6F No. 68, Sec. 1 Cheng-Teh Road,
Taipei, Taiwan, R.O.C.
Phone : +886 (02) 2559 1899
Fax : +886 (02) 2559 1874
E-mail : sales@asia-icom.com
URL : <http://www.asia-icom.com>

Your local distributor/dealer:

Icom Canada

Glenwood Centre #150-6165 Highway 17,
Delta, B.C., V4K 5B8, Canada
Phone : +1 (604) 952-4266
Fax : +1 (604) 952-0090
E-mail : info@icomcanada.com
URL : <http://www.icomcanada.com>

Icom (Europe) GmbH

Communication Equipment
Himmelgeister Str. 100,
D-40225 Düsseldorf, Germany
Phone : +49 (0211) 346047
Fax : +49 (0211) 333639
E-mail : info@icom-europe.com
URL : <http://www.icomeurope.com>

Icom France S.a

Zac de la Plaine, 1,
Rue Brindejonc des Moulins BP 5804,
31505 Toulouse Cedex, France
Phone : +33 (5) 61 36 03 03
Fax : +33 (5) 61 36 03 00
E-mail : icom@icom-france.com
URL : <http://www.icom-france.com>

Beijing Icom Ltd.

10C07, Long Silver Mansion, No.88, Yong Ding
Road, Haidian District, Beijing, 100039, China
Phone : +86 (010) 5889 5391/5392/5393
Fax : +86 (010) 5889 5395
E-mail : bjicom@bjicom.com
URL : <http://www.bjicom.com>

Icom (Australia) Pty. Ltd.

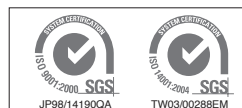
A.B.N. 88 006 092 575
Unit 1 / 103 Garden Road,
Clayton VIC 3168 Australia
Phone : +61 (03) 9549 7500
Fax : +61 (03) 9549 7505
E-mail : sales@icom.net.au
URL : <http://www.icom.net.au>

Icom Spain S.L.

Ctra. Rubi, No. 88 "Edificio Can Castanyer"
08190, Sant Cugat del Valles, Barcelona, Spain
Phone : +34 (93) 590 26 70
Fax : +34 (93) 589 04 46
E-mail : icom@icomspain.com
URL : <http://www.icomspain.com>

Icom Polska

Sopot, 3 maja 54, Poland
Phone : +48 (58) 550 7135
Fax : +48 (58) 551 0484
E-mail : icompolska@icompolska.com.pl
URL : <http://www.icompolska.com.pl>



Icom Inc. (Japan), is an ISO 9001 and ISO 14001 certification acquired company.